

King Air 300/B300/350 LED Upgrades

55% in Weight Savings

40% Lower System
Operating
Temperatures

35% Reduction in
Operating Current



6 Power Supplies
36 or 42 Lights

ADVANTAGES:

- Direct Replacement for the CCFL Power Supplies and Lamps
- No Impact to Aircraft Interior
- Uses the Existing On/Off/Dim Switch
- Eliminates the High Voltage Required for the CCFL Lamps
- 55% Weight Savings (12.4 lbs)
- 40% Lower System Operating Temperatures
- 35% Reduction in Operating Current
- Reduced EMI

LED LIGHTING INTERIOR UPGRADE

Upgrade from fluorescent to LED with PWI's LED King Air 300 lighting. The LED King Air upgrade offers state-of-the-art LED technology paired with cutting edge engineering in LED lighting capabilities. The LED King Air upgrade has equivalent lighting characteristics to the cold cathode fluorescent lights. It is also the same size and dimension as the PWI OEM King Air lighting. PWI offers two color temperature options to choose from - Warm White and Cool White. The King Air 300 upgrade also provides a longer operating life with less ongoing maintenance.

Available in 2 color temperatures:

Warm White (4100K) and Cool White (5100K)

Certifications:

- FAA/STC - SA01634WI
- EASA - 10047156
- ANAC - 2015S05-04
- PMA - #PQ4159CE



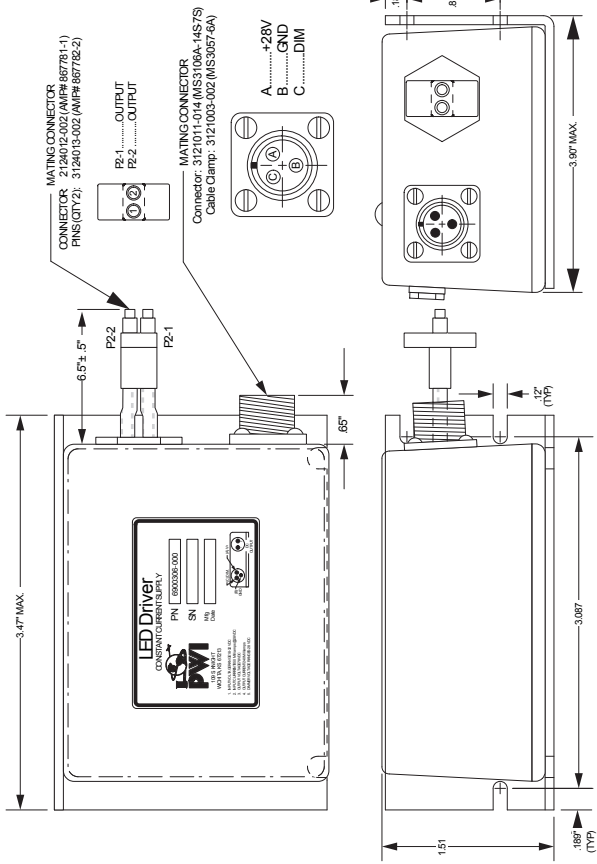
Be BRILLIANT

3		REVISION HISTORY	
REV	DESCRIPTION	DATE	APPROVED

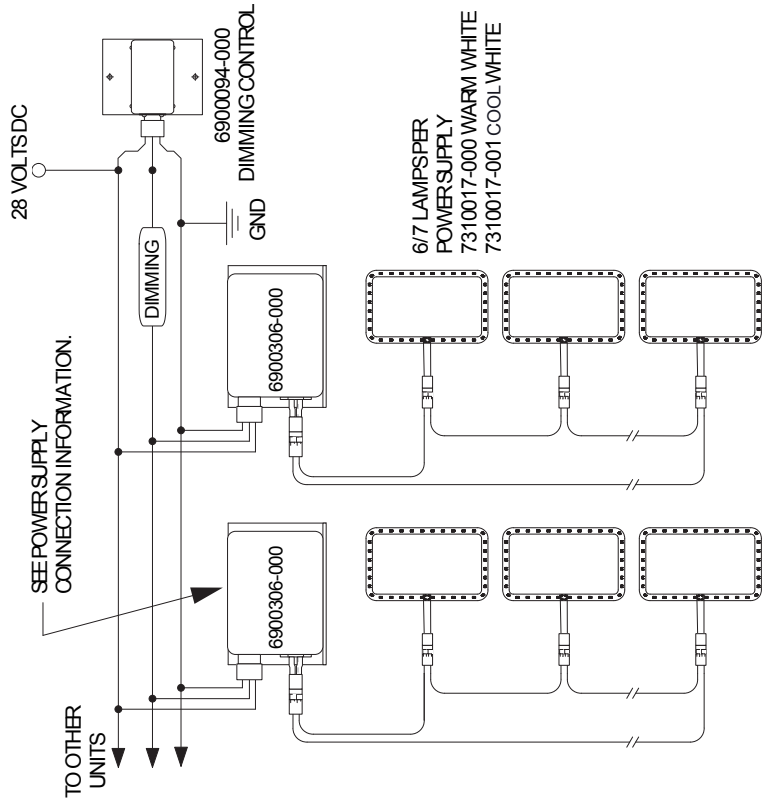
2	
---	--

1	
---	--

PROPRIETARY INFORMATION
THE FURNISHING OF THIS DOCUMENT DOES
NOT CONVEY ANY REPRODUCTION OR MFG.
RIGHTS.



Installation Schematic:



6900306-000			
SPECIFICATIONS	MIN.	TYP.	MAX. UNITS
INPUT VOLTAGE DC	18	28	32 VDC
INPUT CURRENT	-	0.85	1.5 AMPS
OUTPUT VOLTAGE	-	78	84 VDC
OUTPUT CURRENT	-	240	mA
DIMMING	0	-	32 VDC
LAMP LENGTH	6	-	7 Each
WEIGHT	-	21.16	oz.
OPERATING TEMPERATURE	-20	-	+70 Cent.

ORDER P/N:
KINGAIR MODEL 300
WARM WHITE 6900336-036
COOL WHITE 6900336-136

KINGAIR MODEL (350) B300, B300C
WARM WHITE 6900336-042
COOL WHITE 6900336-142

UNLESS OTHERWISE SPECIFIED
DIM ARE IN INCHES
TOL ON ANGLE ± .25°
1 PL ± .1" 2 PL ± .03"
3 PL ± .010" 4 PL ± .0005"
INTERFRET DIM AND TOL PER
ASME Y14.5M-1994

UPDATED W.A.S. 12/8/09
CAD FILE NAME
6900306-000_Sales 12v.mcd

109 S. KNIGHT
WICHITA, KANSAS 67213
TEL: 316-942-2811 FAX: 316-942-6209
PWI
POWER SUPPLY
INSTALLATION

Copyright © 2020 PWI, Inc. All Rights Reserved
SIZE B CAGE CODE 33497
SCALE None

SHEET 1 OF 1

A

B

A

B

3

2

1

3